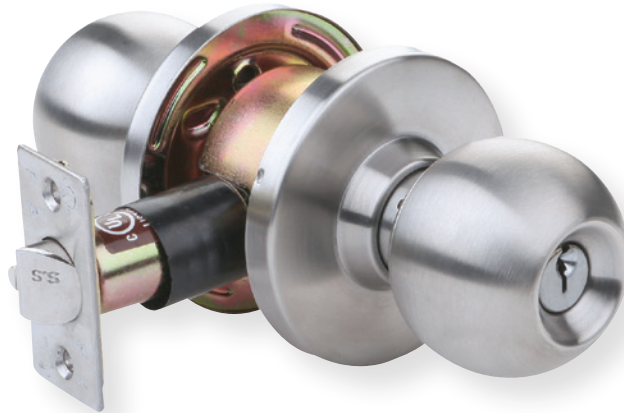


Heavy-Duty Cylindrical Grade 2
KC2300 SERIES



Empire Knob Style (EMP)

FEATURES

- Performance**
- Complies with ANSI A156.2 Series 4000
 - Grade 2, 400,000 cycles
 - UL/ULC listed for 3 hour fire door

- Chassis**
- Cylindrical Steel-coated with zinc dichromate (corrosion resistance)

- Latch**
- 1 1/8" x 2 1/4", square corner faceplate
 - 1" housing diameter (stainless steel)
 - 1/2" throw

- Rose**
- 3" diameter

- Backset**
- Standard: 2 3/4"
 - Optional: 2 3/8"

- Strike**
- Standard: Square corner 1 1/4" x 4 7/8" ANSI ASA Strike
 - Optional: T Strike (1 1/8" x 2 3/4")
 - Optional: F Strike (full lip)

- Cylinder**
- C keyway (SCC)
 - 6-pin solid brass
 - Keyed different (KD)

- Keys**
- Two nickel silver per lock cylinder

- Door Thickness**
- 1 3/8" to 1 3/4"

- Door Preparation**
- 2 1/8" diameter for knob
 - 1" diameter for latch bolt
 - Fits standard 161 door prep.

- Warranty**
- Lifetime limited

KC2300 SERIES

OPTIONS

KEYING 6-pin cylinders, can be pinned to 5-pin.

Cylinders Arrow A (ARA), Corbin 59A1 (C059A1), Corbin 60 (C06), Corbin Russwin L4 (CL4), Options Kwikset (KW1), Russwin D1 (RD1), Sargent LA (SAL), Schlage E (SCE), Schlage F (SCF), Weiser E (WRE), Yale 8 (YA8), Yale GA (YGA)

Tell Cylinder Restricted Tell keyway cylinder available, optional. Tell keyway cylinder is available only keyed to 6-pin.

Keying Options Grand master key (GMK), construction master key (CMK), master key (MK), keyed different (KD), keyed alike (KA), interchangeable core uncombined (IC), 0-bitted (OBIT)

AVAILABLE FUNCTIONS	Classroom 84	Privacy Bed/Bath 76
	Storeroom 86	Passage Hall/Closet 75
	Communicating 91	Exit Latch 80
	Hotel 93	Single Dummy 01

TELL FINISHES



US32D
Satin Stainless Steel



US3
Polished Brass