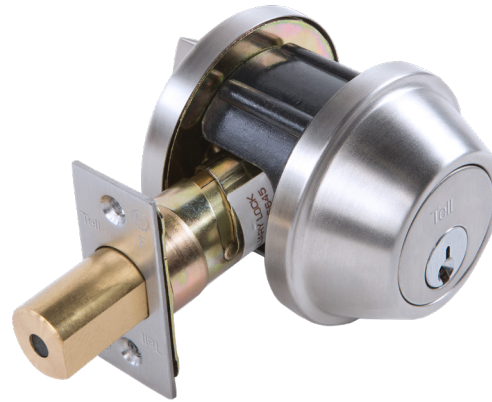


Heavy-Duty Grade 2 Tubular  
**DB2400 SERIES**



**FEATURES**

**Performance** ▪ Complies with ANSI A156.5, Grade 2, 150,000 cycles

**Chassis** ▪ Tubular, steel

**Deadbolt** ▪ 1" x 2 1/4", square corner faceplate  
 ▪ 1" housing diameter (stainless steel)  
 ▪ 1" throw  
 ▪ Roller bar (added security for hacksaw or reciprocating blade cutting)

**Backset** ▪ Adjustable 2 3/8" to 2 1/4". 2 1/4" x 1" faceplate standard  
 ▪ Drive-In optional.

**Strike** ▪ 1 1/8" x 2 3/4", square corner faceplate

**Cylinder** ▪ C keyway (SCC)  
 ▪ 6-pin solid brass  
 ▪ Keyed different (KD)

**Keys** ▪ Two nickel silver per lock cylinder

**Door Thickness** ▪ 1 3/8" - 1 3/4"

**Door Preparation** ▪ 2 1/8" diameter for bore  
 ▪ 1" diameter for bolt  
 ▪ Fits standard 161 door prep

**Warranty** ▪ Limited lifetime

# DB2400 SERIES

## OPTIONS

<b>Keying</b>	6-pin cylinders, can be pinned to 5-pin.
<b>Cylinders</b>	Arrow A (ARA), Corbin 59A1 (C059A1), Corbin 60 (C06), Corbin Russwin L4 (CL4), Options Kwikset (KW1), Russwin D1 (RD1), Sargent LA (SAL), Schlage E (SCE), Schlage F (SCF), Weiser E (WRE), Yale 8 (YA8), Yale GA (YGA)
<b>IC Keyway Cylinders Available 6- or 7-Pin</b>	Best A (BA), Best B (BB), Best C (BC), Best D (BD), Best E (BE), Best F (BF), Best G (BG), Best H (BH), Best J (BJ), Best K (BK), Best L (BL), Best M (BM), Best Q (BQ), Best U (BU), Black construction core (BLK), Less core (00), Not specified (XX)
<b>Keying Options</b>	Grand Master Key (GMK), Construction Master Key (CMK), Master Key (MK), Keyed Different (KD), Keyed Alike (KA), Interchangeable Core uncombined (IC), 0-bitted (OBIT)
<b>Available Functions</b>	Double Cylinder 2041 Single Cylinder 2051 Communicating 25 Communicating with Backplate K25

### Tell Finishes



US32D  
Satin Stainless Steel

## ACCESSORIES

### DRIVE-IN LATCHES

#### CL100177 — 2 3/4" Guarded, US26D

Drive-in latch, adjustable..



# Heavy-Duty Grade 2 Tubular DB2400 SERIES

## FUNCTION CHART

OUTSIDE	INSIDE	FUNCTION	FEATURES	ANSI
		<b>Double Cylinder 41</b>	• Deadbolt operated by key outside, key inside	E0141
		<b>Single Cylinder 51</b>	• Deadbolt operated by key outside, thumb turn inside	E0151
		<b>Single Cylinder Heavy Duty 51HD</b>	• Deadbolt operated by key outside, thumb turn inside	E0152

OUTSIDE	INSIDE	FUNCTION	FEATURES	ANSI
		<b>Communicating 25</b>	• Deadbolt operated by inside, thumb turn only	E0162
		<b>Communicating with Backplate K25</b>	• Deadbolt operated by inside, thumb turn only with backplate	E0162

## HOW TO ORDER (see product page for complete lists of options)

TRIM	GRADE	PRODUCT FAMILY	FUNCTION	FINISH	BACKSET	KEYWAY CYLINDER	IC KEYWAY CYLINDER	KEYING
				US3 US32D		XX 00 BLK BD BC BB BA		OBIT IC KA KD MK CMK GMK
DB	2	0	41	US32D	ADJ	BA <sup>†</sup>	SCC <sup>†</sup>	GMK
	2		41 41C 51 51C 51HD 25 K25		ADJ DI	Adjustable 2 3/4" - 2 3/4" Drive-in Latch	SCC ARA C059A1 C06 CL4 KW1 WRE	0-Bitted Interchangeable Core Uncombined Keyed Alike Keyed Different Master Key Construction Master Key Grand Master Key

<sup>†</sup> Choose one Keyway format; either Restricted /Non-IC Keyway Cylinder or IC Keyway Cylinder.

All cylinders come keyed 6-pin, can be keyed 5-pin on request.

COMMERCIAL DOORS & HARDWARE | 800.433.4047 | tellmfg.com